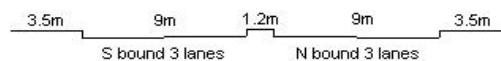


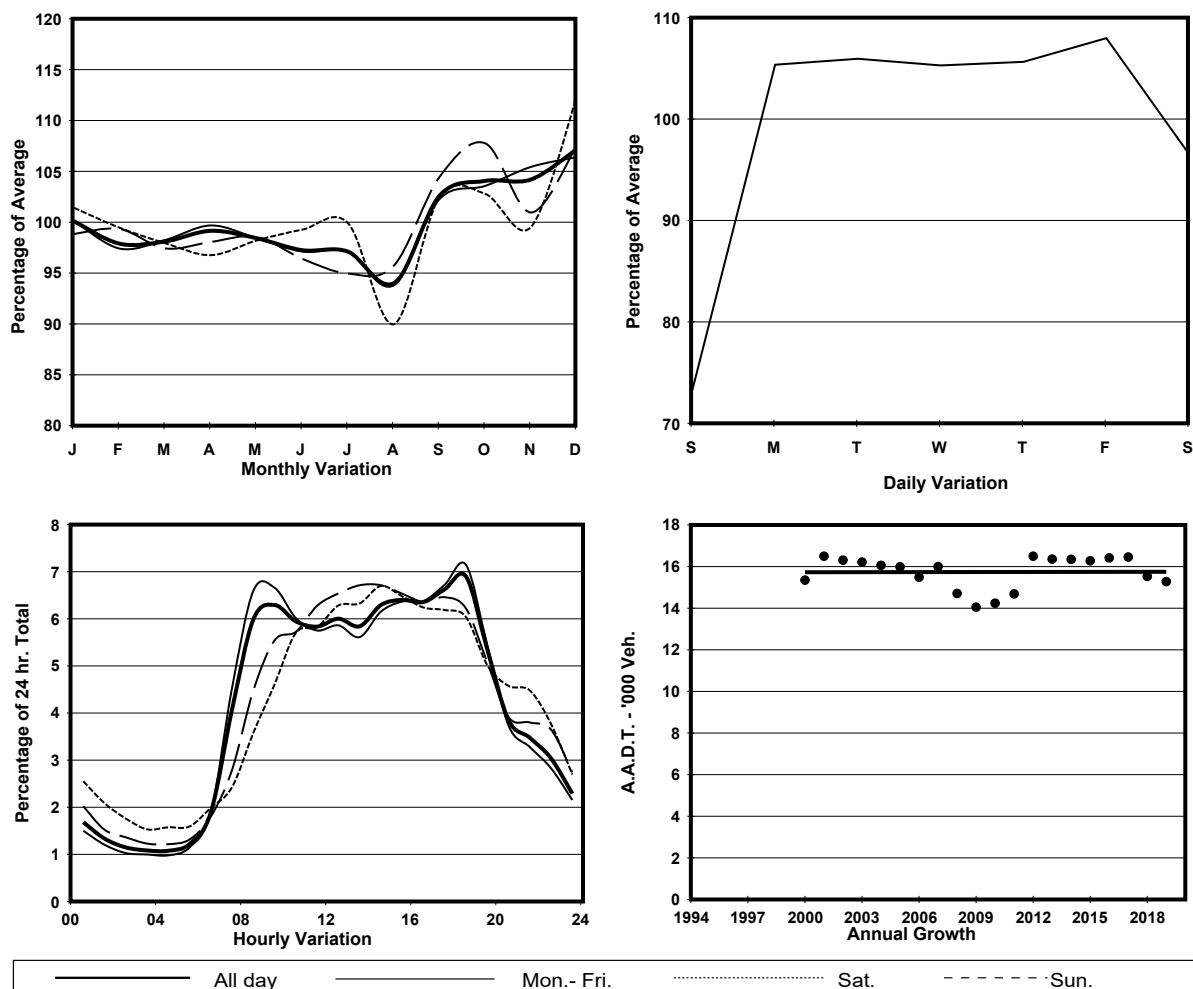
YEAR

2019

LINK LAI CHI KOK RD (from TONKIN ST to HING WAH ST)

CORE STATION  
ROAD NETWORK  
ROAD TYPE3008  
MAJOR  
PRIMARY DISTRIBUTOR

## 1. TRAFFIC FLOW VARIATION AND GROWTH



## 2. TRAFFIC CHARACTERISTICS (BY DIRECTION)

Parameter	All - Day	Mon. - Fri.	Sat.	Sun.
<b>SOUTH BOUND</b>				
A.A.D.T.	5810	6110	5920	4780
R 12 / 24 - %	71.3	72.3	70	66.3
R 16 / 24 - %	86.4	87.1	85.5	83
AM Peak Hour	0900-1000	0900-1000	0900-1000	0900-1000
One-way flow at AM peak hour	330	370	320	200
T - % (AM)	-	-	-	-
PM Peak Hour	1800-1900	1800-1900	1700-1800	1600-1700
One-way flow at PM peak hour	370	400	380	320
T - % (PM)	-	-	-	-
Prop.of commercial vehicles - 16 hr.	-	-	-	-
<b>NORTH BOUND</b>				
A.A.D.T.	9470	10330	9020	6630
R 12 / 24 - %	73.3	74.7	70.6	66.5
R 16 / 24 - %	89.4	90.3	87.7	85.2
AM Peak Hour	0900-1000	0800-0900	0900-1000	0900-1000
One-way flow at AM peak hour	630	740	500	320
T - % (AM)	-	-	-	-
PM Peak Hour	1800-1900	1800-1900	1700-1800	1700-1800
One-way flow at PM peak hour	680	780	590	400
T - % (PM)	-	-	-	-
Prop.of commercial vehicles - 16 hr.	-	-	-	-

## 3. OTHER INFORMATION AND COMMENT